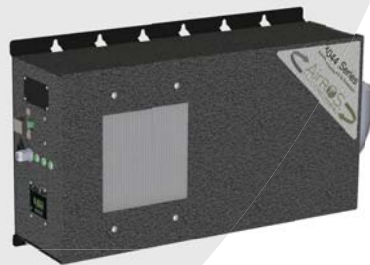




# 4000 SERIES

Advanced Purification System  
Purifiers, controllers, & sensors





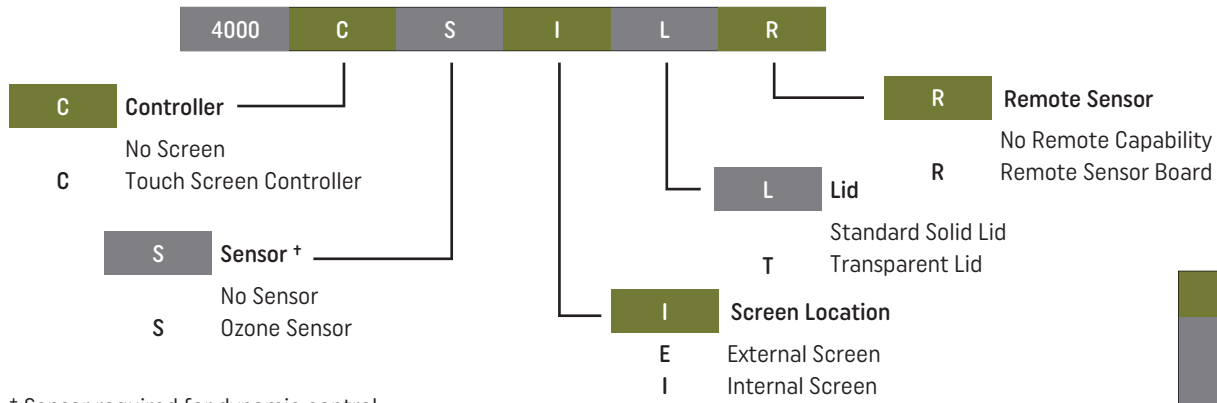
# GROSHIELD CONTROLLER SERIES

Advanced Purification System  
4000 Controller Models



- Simple installation
- Touch screen controller
- Dynamic or Manual Control
- Solid or Transparent Lid
- Purifier provides power to controller - No Electrical needed.
- Logging on microSD for reporting
- Locking Latch option

# Part Number



+ Sensor required for dynamic control

Examples:
4000CSI
4000CITR/4000S
4000CSIT
4000CIT



4000CSE



4000CSI



4000CITR



4000CSIT



4000S

Model	Contoller	Sensor	Dimensions	Lid	Remote
4000CSE	External	Yes	6w x 6h x 4d	Black Body	No
4000CI(2)	Internal	No	6w x 6h x 6d	Solid Locking Latch	No
4000CIT	Internal	No	6w x 6h x 6d	Transparent Locking Latch	No
4000CSI	Internal	Yes	6w x 6h x 6d	Solid Locking Latch	No
4000CSIT	Internal	Yes	6w x 6h x 6d	Transparent Locking Latch	No
4000CIR*	Internal	4000S Required	6w x 6h x 6d	Solid Locking Latch	Yes
4000CITR*	Internal	4000S Required	6w x 6h x 6d	Transparent Locking Latch	Yes
4000S	Requires 4000CIR or 4000CITR	Yes	6w x 6h x 6d	Solid	Yes

Model	Description	Dimensions	Additional Amps	Additional Watts
C	Touch Controller	6w x 6h x 4d	0.02	2.4
CS	Touch Controller and Sensor	6w x 6h x 4d	0.05	6.0



RS485X-Box  
RS485 to Analog 0-5VDC for remote reporting



PROUDLY MADE IN THE USA



1865 Herndon Ave. Ste. K126 | Clovis, CA 93611  
T 855.201.SAGE | www.SAGEINDUSTRIAL.com



## GROSHIELD SERIES Advanced Purification System

4001, 4002, 4004, 4005, 4007 & 4030 Purifier Models



- Plug and play installation and activation
- Ultra-Low Energy efficiency <0.9 Amps (108w 120V 1PH)
- Touch screen controller
- Dynamic monitoring control with internal/external controller and sensor
- Easy maintenance
- Logging on microSD for reporting
- Portable Option

How it Works:

**Existing Air  
(Containing Microorganisms)**



**ROS  
(Reactive Oxygen Species)**

AirROS purifiers utilize electricity and create ROS. The highly-reactive ROS inside the purifier DESTROYS Molds, Pathogens, Viruses, and Odors as they pass through the chamber.

The sanitized air that comes out of the purifier enters the environment and continues to sanitize ALL surfaces it contacts.

# GroShield Surface & Air Purifiers will sanitize indoor air & surfaces in rooms 100-90,000 cubic feet\* using less than 0.89Amps (106.8 watts)

\*treatment area depends on oxygen levels, temperature, and commodity.

## ► Model Number

4001	1,000 ft <sup>3</sup> *	4002	2,000 ft <sup>3</sup> *
4004	4,000 ft <sup>3</sup> *	4005	5,500 ft <sup>3</sup> *
4007	7,500 ft <sup>3</sup> *	4030	30,000 ft <sup>3</sup> *
C	Controller - Touch Screen Controller		
S	Sensor - Ozone †		
P	Portable - Handle/feet		
I	Internal Controller option		
E	External Controller option		
T	Transparent Controller Lid w/ SS Latch		
R	Remote Sensor option		

## ► Benefits:

- Destroys Mold, Bacteria, Yeast, Pathogens, & Viruses
- Eliminates/neutralizes Odor
- Organic no-chemicals added
- Reduces cross-contamination
- Ultra-low power consumption

### Example Configurations:

4002CS  
4004C-P  
4007/4000CSI  
4007/4000CIT/4000S

Dimensions: 16w x 12h x 7d (16w x 13.7h x 7d Portable)

Standard Wall Mount  
3inch (3.5"OD) PVC Sch40 Output

† Internal or External sensor required for dynamic control

\* Actual Capacity depends on Oxygen level, Temp, and Commodity factors



GROSHIELD SERIES

4000C SERIES

Model	Capacity ft <sup>3</sup>	Weight	Amps	Watts
4001 (-P)	1,000	13.8 (15.0)	0.38	45.6
4001C (-P)	1,000	14.2 (15.4)	0.38	45.6
4001CS (-P)	1,000	14.4 (15.6)	0.38	45.6
4002 (-P)	2,000	13.8 (15.0)	0.41	49.2
4002C (-P)	2,000	14.2 (15.4)	0.41	49.2
4002CS (-P)	2,000	14.4 (15.6)	0.41	49.2
4004 (-P)	4,000	13.8 (15.0)	0.405	48.6
4004C (-P)	4,000	14.2 (15.4)	0.405	48.6
4004CS (-P)	4,000	14.4 (15.6)	0.405	48.6
4005 (-P)	5,500	11.6 (12.8)	0.407	48.8
4005C (-P)	5,500	12.0 (13.2)	0.407	48.8
4005CS (-P)	5,500	12.2 (13.4)	0.407	48.8
4007 (-P)	7,500	13.8 (15.0)	0.435	52.2
4007C (-P)	7,500	14.2 (15.4)	0.435	52.2
4007CS (-P)	7,500	14.4 (15.6)	0.435	52.2
4030 (-P)	30,000	10.0 (11.2)	0.885	106.2
4030C (-P)	30,000	10.4 (11.6)	0.885	106.2
4030CS (-P)	30,000	10.6 (11.8)	0.885	106.2
Model	Description	Dimensions	Additional Amps	Additional Watts
4000CI(T,R) 4000CS(E,I)	Touch Controller	6w x 6h x 4d	0.02	2.4
4000S	Sensor	6w x 6h x 4d	0.03	3.6



PROUDLY MADE IN THE USA



1865 Herndon Ave. Ste. K126 | Clovis, CA 93611  
T 855.201.SAGE | www.SAGEINDUSTRIAL.com



## GROSHIELD PRO SERIES

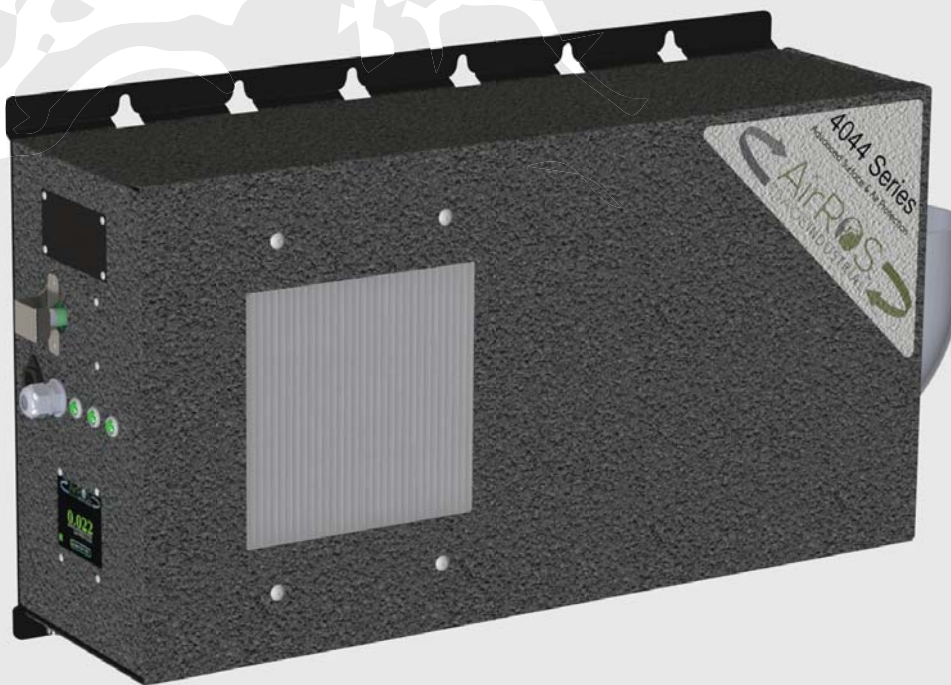
Advanced Purification System

4011, 4014, 4035, & 4037 Purifier Models

## GROSHIELD PRO XL SERIES

Advanced Purification System

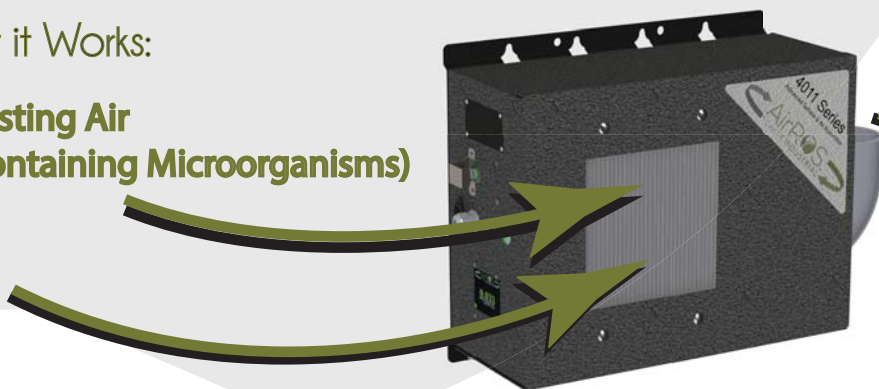
4022, 4028, 4044, & 4050 Purifier Models



- Plug and play installation and activation
- Ultra-Low Energy efficiency <math><1.67\text{Amps}</math> (200w 120V 1PH)
- Touch screen controller
- Dynamic monitoring control with internal/external controller and sensor
- Easy maintenance
- Logging on microSD for reporting
- Portable Option

How it Works:

**Existing Air**  
(Containing Microorganisms)



**ROS**  
(Reactive Oxygen Species)

AirROS purifiers utilize electricity and create ROS. The highly-reactive ROS inside the purifier DESTROYS Molds, Pathogens, Viruses, and Odors as they pass through the chamber.

The sanitized air that comes out of the purifier enters the environment and continues to sanitize ALL surfaces it contacts.

# GroSHIELD PRO Surface & Air Purifiers will sanitize indoor air & surfaces in rooms 1,100-50,000 cubic feet using less than 1.67Amps (200 watts)

## ► Model Number

4011	11,000 ft <sup>3</sup> *	4022	22,000 ft <sup>3</sup> *
4014	14,000 ft <sup>3</sup> *	4028	28,000 ft <sup>3</sup> *
4035	35,000 ft <sup>3</sup> *	4037	37,000 ft <sup>3</sup> *
4044	44,000 ft <sup>3</sup> *	4050	50,000 ft <sup>3</sup> *
C	Controller - Touch Screen Controller		
S	Sensor - Ozone +		
P	Portable - Handle/feet		
I	Internal Controller option		
T	Transparent Controller Lid w/ SS Latch		
R	Remote Sensor option		

+ Internal or External sensor required for dynamic control

\* Actual Capacity depends on Oxygen level, Temp, and Commodity factors

## ► Benefits:

- Destroys Mold, Bacteria, Yeast, Pathogens, & Viruses
- Eliminates/neutralizes Odor
- Organic no-chemicals added
- Reduces cross-contamination
- Ultra-low power consumption

### Example Configurations:

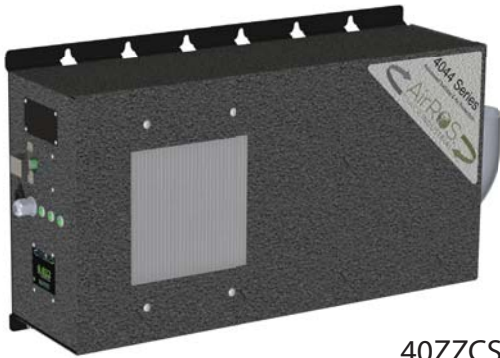
4037CS  
4037C-P  
4044/4000CSI  
4050/4000CIT/4000S

Standard Wall Mount

4inch (4.5"OD) PVC Sch40 Output



40YYCS



40ZZCS



4000CSE



4000CSI  
4000S



4000CITR

PRO SERIES

PRO XL SERIES

4000C SERIES

Model	Capacity ft <sup>3</sup>	Dimensions	Amps	Watts
4011	11,000	24w x 17h x 9d	0.642 - 0.768	92
4014	14,000	24w x 17h x 9d	0.645 - 0.845	101
4035	35,000	24w x 17h x 9d	0.662-1.443	173
4037	37,000	24w x 17h x 9d	0.662-1.465	175
4022	22,000	34w x 17h x 9d	0.642-0.894	107
4028	28,000	34w x 17h x 9d	0.642-1.048	125
4044	44,000	34w x 17h x 9d	0.662-1.564	188
4050	50,000	34w x 17h x 9d	0.662-1.668	200
-C			+0.02	+2.4
-S			+0.03	+3.6

Model	Description	Dimensions	Additional Amps	Additional Watts
4000CI(T,R) 4000CS(E,I)	Touch Controller	6w x 6h x 4d	0.02	2.4
4000S	Sensor	6w x 6h x 4d	0.03	3.6



PROUDLY MADE IN THE USA



1865 Herndon Ave. Ste. K126 | Clovis, CA 93611  
T 855.201.SAGE | www.SAGEINDUSTRIAL.com



## Existing Air (Containing Microorganisms)

AirROS purifier utilizes electricity and creates ROS. The highly-reactive ROS inside the purifier DESTROYS Molds, Pathogens, Viruses and Odors as they pass through the chamber.

## GROSHIELD TITAN SERIES

Advanced Purification System

4120 Purifier Models



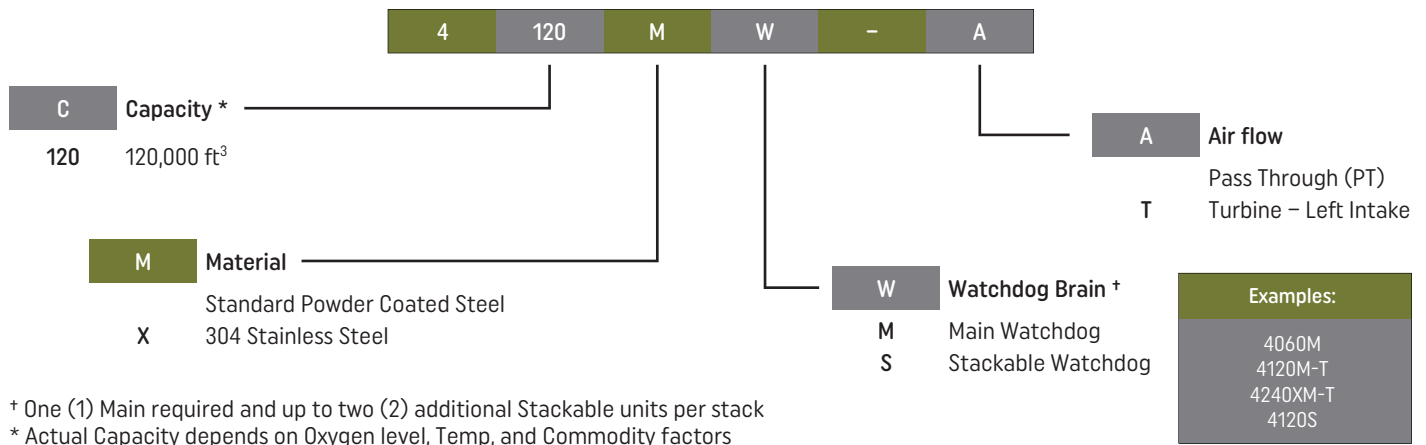
## ROS (Reactive Oxygen Species)

The sanitized air that comes out of the purifier enters the environment and continues to sanitize ALL surfaces it contacts.

- NEMA 1 Enclosure – Plug and play installation and activation
- 2-12 stages of control with internal controller and attached sensor
- Stackable in increments of 120,000 ft<sup>3</sup>
- Ethernet available for Web monitoring
- Super Bright LED indicator lights (All Green available)
- Enhanced Filter Kit (MERV 11) can be mounted in-line with optional housing



## ► Part Number



### TITAN SERIES

4120M-T	4120S	Air	Capacity ft <sup>3</sup>	Horizontal Stack Size	Vertical Stack Size	Amps	Watts
1ea		Turbine	120,000	41.5w x 14h x 12d	14w x 41.5h x 12d	0.56 standby 3.41 peak	67-410
1ea	1ea	Turbine	180,000	41.5w x 28h x 12d	28w x 41.5h x 12d	+2.32 peak	+278 peak
1ea	2ea	Turbine	360,000	41.5w x 42h x 12d	42w x 41.5h x 12d	+2.32 peak	+278 peak



4000S  
4000CSI



4000CSE



4000CITR



930 Kit

### 4000C SERIES

Model	Description	Dimensions	Additional Amps	Additional Watts
4000CI(T,R) 4000CS(E,I)	Touch Controller	6w x 6h x 4d	0.02	2.4
4000S	Sensor	6w x 6h x 4d	0.03	3.6
930 Kit	Sensor	8w x 4h x 4d	0.03	3.6



SAGE-EFK-TT-SV  
EFK Pass Through Filter Housing



RS485X-Box  
RS485 to Analog 0-5VDC for remote reporting



PROUDLY MADE IN THE USA



1865 Herndon Ave. Ste. K126 | Clovis, CA 93611  
T 855.201.SAGE | www.SAGEINDUSTRIAL.com



# GROSHIELD TITAN XL SERIES

Advanced Purification System  
4240 & 4240X Purifier Models



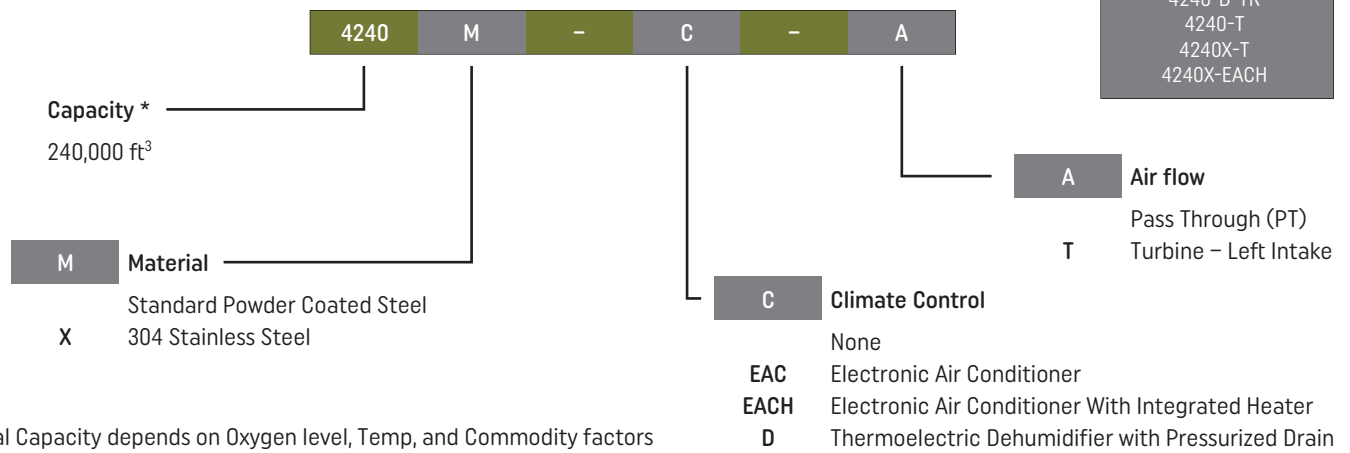
SAGE-4240X-WB  
SS Wall Bracket for 4240



SAGE-4240-FP  
12" Floor Pedestal for 4240 (-SS Stainless Steel)

- NEMA 4 or NEMA 4X Enclosures
- 8 stages of control with internal controller and an attached sensor.
- Dehumidifier and Air conditioning with Heater options
- Ethernet available for Web monitoring
- Super Bright LED indicator lights
- Left or Right exhaust/Intake available
- Enhanced Filter Kit (MERV 11) can be mounted in-line with optional housing.

## ► Part Number



Model	4240	4240X	4240-T	4240X-T	4240-EACH	4240-D-T
Cabinet Material	Powder Coated Steel	Stainless Steel 304	Powder Coated Steel	Stainless Steel 304	Powder Coated Steel	Powder Coated Steel
Weight (lbs.) - Est.	260	275	270	285	305	274
Depth (in)	22	22	22	22	22	22
Height (in)	64	64	64	64	64	64
Width (in)	29	29	29	29	35	29
PVC Flanges	4"	4"	4"	4"	4"	4"

### POWER

Volts	120VAC	120VAC	120VAC	120VAC	120VAC	120VAC
Phase	1	1	1	1	1	1
Max Amps	10A	10A	11A	11A	18A	15.5A
Watts	1200W	1200W	1320W	1320W	2160W	1860W
Frequency	60Hz	60Hz	60Hz	60Hz	60Hz	60Hz

### CONDITIONS

Indoor Ambient Temperature (°F)	320° to 105°	320° to 105°	320° to 105°	320° to 105°	320° to 105°	320° to 105°
Outdoor Ambient Temperature (°F)	32° to 75°	32° to 75°	32° to 75°	32° to 75°	32° to 75°	32° to 75°
Inlet Air Humidity	80% non-condensing	80% non-condensing	80% non-condensing	80% non-condensing	80% non-condensing	80% non-condensing
IP Protection	IP-66	IP-66	IP-66	IP-66	IP-66	IP-66
NEMA Type	4	4X	4	4X	4	4
Air Requirements	150-180CFM	150-180CFM	Turbine	Turbine	150-180CFM	Turbine

Specifications subject to change without notice



SAGE-EFK-TT-SV  
EFK Pass Through Filter Housing



PROUDLY MADE IN THE USA



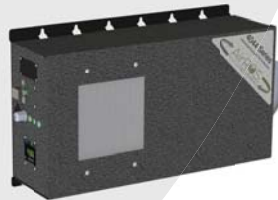
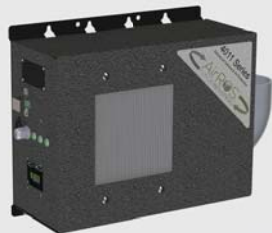
SAGE  
INDUSTRIAL

1865 Herndon Ave. Ste. K126 | Clovis, CA 93611  
T 855.201.SAGE | [www.SAGEINDUSTRIAL.com](http://www.SAGEINDUSTRIAL.com)



# GROSHIELD SERIES

Advanced Purification System  
4000 Series Maintenance Parts



# AirROS Surface & Air Purifiers will sanitize indoor air & surfaces in rooms provided regular maintenance is performed.

Suggested intervals depend on sizing, application and usage.  
6-12mo interval is normal.



CHAMB-40XXQC-CP



CHAMB-40YYQC-CP



CHAMB-4000QC-CP

Part #	Description	UM	Dimensions
CHAMB-40XXQC-CP	Chamber for GroSHIELD (4001, 4002, 4004, 4005, 4007, & 4030)	EA	13" x 3"
CHAMB-40YYQC-CP	Chamber for GroSHIELD PRO (4011, 4014, 4035, & 4037)	EA	12" x 4"
CHAMB-4000QC-CP	Chamber for GroSHIELD PRO XL (4022, 4028, 4044, & 4050)	2pk	21" x 4"
CHAMB-4000QC-CP	Chamber for GroSHIELD Titan (4120M & 4120S)	2pk	21" x 4"
CHAMB-4000QC-CP	Chamber for GroSHIELD Titan XL (4240)	EA	21" x 4"



EFK-40XX-F



SAGE-EFK-F

Part #	Description	UM	Dimensions
EFK-40XX-F	Enhanced Filter for GroSHIELD (4001, 4002, 4004, 4005, 4007, & 4030)	EA	3"
SAGE-EFK-F	Enhanced Filter for GroShield PRO, PRO XL, Titan & Titan XL	EA	10" x 10" x 2"
Filter Kit - 4120 -CAB	Cabinet Filter kit for Titan (4120M & 4120S)	5pk	8" x 2" x 1"
40XX EFK Retrofit Kit	EFK Retrofit kit for GroShield (Legacy Ring & Base)	EA	



4000S-Sensor



905 RA



935 RA

Part #	Description	UM	Dimensions
4000S-Sensor	Replacement Sensor for 4000S, or 4000CS(I,E,T) models	EA	2.5" x 3" x 2"
905 RA Sensor	Replacement Sensor for S300	EA	5" x 2" x 3"
935 RA Sensor	Replacement Sensor for 930Base	EA	5" x 2" x 3"



PROUDLY MADE IN THE USA



1865 Herndon Ave. Ste. K126 | Clovis, CA 93611  
T 855.201.SAGE | [www.SAGEINDUSTRIAL.com](http://www.SAGEINDUSTRIAL.com)